



wShield

ADMIXTURES



**FOR THE STURDIEST
FOUNDATIONS**



1 AC 100 Accelerating Admixture

What if you could finish a slab in an hour instead of an entire day? Come experience AC 100, a multipurpose concrete additive designed to accelerate the normal setting time of concrete. It can be used in concrete, mortar & plasters. AC 100 enhances concrete's pliable & hardened qualities, including workability, compressive strength & flexural strength.

FEATURES:

- Significantly increases set time over regular concrete.
- Improves quality of concrete by decreasing water cement ratio.
- Improves workability.
- Increases compressive & flexural strengths both early & ultimate.
- Provides superior finish ability on all flatwork & pre-cast surfaces.

USES:



Quicker Slab Process



Reduces Segregation



Condensation Control



Advance Structural Concrete



Less Permeable

2 ADMIX 500 SNF Based Super Plasticizer Admixture

The market has been waiting for an economical way to reduce concrete costs while still obtaining the strength & durability required. Admix 500 (SNF based super plasticiser admixture) is the answer! It acts as a dispersant for cement particles in your mix, producing a high-performance, long-lasting concrete that is both economical & efficient. It is the choice for your next project!

FEATURES:

- Reduces permeability with better surface finish.
- Produces dense concrete & hence improves waterproofing characteristics.
- Chloride free, safe for use in prestressed & reinforced concrete.
- Improves the quality of concrete by decreasing the water cement ratio.
- Accelerates set time & early strength gain more than conventional water reducers.

USES:



Compacting & Flexible



Avoids Cracking



Air Entraining Properties



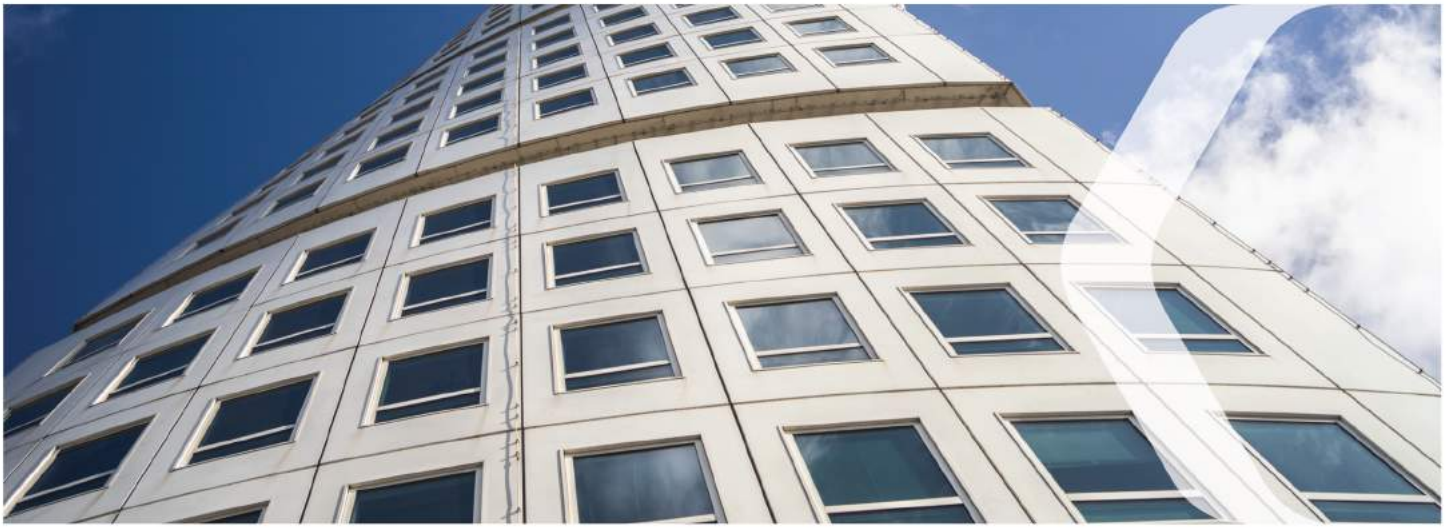
Improved Workability & Finishing



Less Segregation



Enhanced Pumpability



3 ADMIX 1000 Low PCE Based Super Plasticizing Admixture

The Admix 1000 admixture is a low-cost, chloride-free, low-alkali, polycarboxylate-based superplasticiser that is compatible with all types of cements & is a highly elastic, waterproof & flexible product. It is suitable for a variety of concrete applications.

FEATURES:

- Economical high performance producing.
- High-grade ready-mix concrete.
- Easier placing & faster strength development.
- High water reduction ability.
- Efficiency at low dosage in ready-mix.
- Versatile dispersant.

USES:



Increases Workability & Durability



Easy to Use



Increases Productivity



Reduces Costs



Enhanced Pumpability

4 ADMIX 2000 Mid PCE Based Super Plasticizing Admixture

Introducing Admix 2000 is a PCE-based admixture that is perfect for use in a wide range of mid-grade concrete applications. Admix 2000 is polycarboxylate-based mixture that can be used in a wide variety of concrete mixes (mid-level performance). Admix 2000 has no chloride, is low in alkali & is compatible with all types of cement.

FEATURES:

- Economical high-performance producing.
- High-grade ready-mix concrete.
- Easier placing & faster strength development.
- High water reduction ability.
- Efficiency at low dosage in ready-mix.
- Versatile dispersant.

USES:



Increases Workability & Durability



Easy to Use



Increases Productivity



Reduces Costs



Enhanced Pumpability



5 ADMIX 3000 High Range PCE Based Super Plasticizing Admixture

Admix 3000 is a High range PCE-based super plasticizing polycarboxylate based admixture that is perfect for a wide range of concrete applications of all grades. It is a PCE based admixture that is free of chloride & has low alkali levels. It is suitable for all kinds of cement. Admix 3000 is a product for you!

FEATURES:

- Economical high-performance producing.
- High-grade ready-mix concrete.
- Easier placing & faster strength development.
- High water reduction ability.
- Efficiency at low dosage in ready-mix.
- Versatile dispersant.

USES:

-  Increases Workability & Durability
-  Easy to Use
-  Increases Productivity
-  Reduces Costs
-  Enhanced Pumpability

6 AR 300 Air-Entraining Admixture

Being an expert isn't required to finish the job. The concrete stiffener you've been longing for is here. AR 300 is a special admixture that can be used in concrete or mortar. It improves workability, freeze thaw durability & strength. Its chemical composition & physical properties make it ideal for many construction applications.

FEATURES:

- Air entrainment increases the resistance of concrete to attack by frost and de-icing salts, reducing problems of surface scaling and concrete failure.
- Entrained air bubbles assist in the formation of a stable cohesive mix, reducing segregation and bleeding.
- Air entrainment improves workability and helps produce a dense, uniform, close textured surface free from gravel nests and sand runs, so further enhancing durability.
- Excellent air bubble stability allows use with a wide range of aggregate qualities and mix conditions.

USES:

-  Excellent Workability
-  Cohesive
-  Deicing Properties
-  Water Tight Integrity
-  Enhanced Pumpability



7 VM 200 Viscosity Modifying Admixture

VM 200 is an admixture that makes concrete more viscous & easier to self-compact. When added to concrete, it makes it more stable & less likely to segregation. It also allows for a higher quality surface finish, as well as reduced bleeding, segregation & sedimentation in concrete, mortars & grouts.

FEATURES:

- Enables a modification of the flow properties & rheology of mortar & concrete.
- Increases the viscosity & cohesiveness of the concrete mix.
- Reduces concrete bleeding.
- Reduces segregation in high water cementitious & high slump mixes.
- Aids in concrete mix stability with gap-graded aggregates.
- Can be introduced at the batch plant or job site.

USES:



For SCC



Excellent Stability



Setting of Concrete



Enhanced Pumpability and Finishing



Easy to Disperse





Walplast Products Pvt. Ltd. ISO 9001 : 2015 Certified Company

Toll-Free No.: 1800 3000 6650

Email: customercare@walplast.com

Website: www.walplast.com

FOLLOW
US ON



SCAN FOR
MORE DETAILS

