

Walplast®

# HOMESURE

## WALL PUTTY

MILAYE  
SIRF PAANI  
LAGAYE BINA  
PARESHAANI™



### Highlights

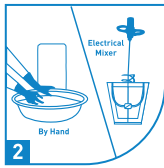
- ✓ Whitest Putty
- ✓ Reduces Paint Consumption
- ✓ Strong Bonding To The Base Plaster
- ✓ White Cement Based Polymer Modified Putty

1, 5, 20 & 40 Kg Bag | PACKAGING

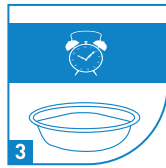
## HOW TO APPLY



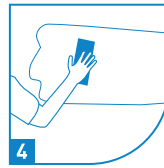
1 Clean the surface with sand paper / putty blade & then dampen the surface.



2 Add Putty in water to obtain a lump free paste & mix well. (Recommended mix 40% water)



3 Let it stand for 10 minutes for additives to dissolve & then remix it again for 2 minutes.



4 Apply 1<sup>st</sup> coat with putty blade. (Thickness of 0.5-1 mm)



5 Allow the surface to dry for atleast 3-4 hours.



6 Pre wet the 1<sup>st</sup> coat need based and then apply 2<sup>nd</sup> coat.

## KEY FEATURES

- Avoids frequent repainting
- Aesthetic look for ceiling, interior & exterior walls
- True colour tone of the paint is maintained
- Protects expensive paint from dampness & peeling
- Long lasting - smooth finish
- Cost - Effective

## TECHNICAL INFORMATION

TEST	TEST METHOD	SPECIFICATION	RESULTS
Water Demand	IS:4031(Part-4)1988	30-45%	34.5
Workability	Internal	Good	Good
Whiteness	IS: 8042-1989	> 70%	86.5
Pot Life	Internal	>90 Minutes	115
Setting Time: Initial	IS:4031 (part-5) :1988	>30min	295
Setting Time: Final		<=600 min	315

PROPERTY	TYPICAL RESULTS
Coverage	12 - 15 Sq.Ft/Kg (Depending on surface of the Wall)



STORAGE



**Walplast Products Pvt. Ltd.** ISO 9001 : 2015 Certified Company

**Corporate Office:** Rainbow Building, Plot No. 13, Sector - 24, Mumbai Pune Highway Service Road, Turbhe, Navi Mumbai - 400 705, Maharashtra, India. **Tel no.:** 022-41418282. **Enquiry No.:** 1800 3000 6650

**Email:** sales@walplast.com, customercare@walplast.com / **For more details visit us at:** www.walplast.com

**Disclaimer:** The product information and application details given by the company and its agents has been provided in good faith and meant to serve only as a general guideline during usage. Users are advised to carry out test and take trials to ensure on the suitability of the products meeting their requirement prior to the full scale usage of our products. Since the correct identification of the problems, quality or other materials used and the on-site workmanship are factors beyond our control, there are no guarantee/warranty as to the result obtained. The company does not assure any liability for unsatisfaction results arising from the use of our products.