

Walplast®

# HOMESURE

PREMIUM PUTTY



WATER PROOF  
PUTTY

MILAYE  
SIRF PAANI  
LAGAYE BINA  
PARESHAANI™



20 Kg Bag | PACKAGING

## Highlights



No Curing  
Required



Low  
Repairs

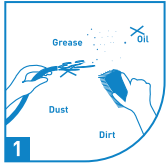


Cost  
Effective

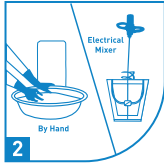


Time  
Saving

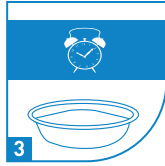
## HOW TO APPLY



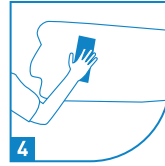
1 Clean the surface with sand paper / putty blade & then dampen the surface.



2 Add Putty in water to obtain a lump free paster & mix well. (Recommended mix 35-40% water)



3 Let it stand for 10 minutes for additives to dissolve & then remix it again for 2 minutes.



4 Apply 1<sup>st</sup> coat with putty blade. (Thickness of 0,5-1 mm)



5 Depending on wall condition allow the surface to dry for at least 3 hours or more & then need based cure the 1st coat.



6 Apply 2nd coat & allow the surface to dry completely. (Thickness of 0.5 – 1mm.)

Note: Putty mixing machine recommended.

## TECHNICAL INFORMATION

SPECIFICATION	LIMITS
Residue on 240 mesh	< 3%
Water Retentivity	> = 95%
Water Absorption	W1 - 0.40 Kg/m <sup>2</sup> W2 - 0.20 Kg/m <sup>2</sup>

PROPERTY	TYPICAL RESULTS
Coverage	12 - 15 Sq.Ft/Kg (Depending on surface of the Wall)
Pot Life	More than 90 Minutes

## KEY FEATURES

- Protect expensive paints from flaking, dampening & peeling
- Water Resistant
- Durable & long – lasting performance
- Excellent white and smooth finish
- No water curing required
- Cost – Effective
- Time – Saving



### STORAGE



**Walplast Products Pvt. Ltd.** ISO 9001 : 2015 Certified Company

**Corporate Office:** Rainbow Building, Plot No. 13, Sector - 24, Mumbai Pune Highway Service Road, Turbhe, Navi Mumbai - 400 705, Maharashtra, India. Tel no.: 022-41418282. Enquiry No.: 1800 3000 6650

**Email:** sales@walplast.com, customercare@walplast.com / **For more details visit us at:** www.walplast.com

**Disclaimer:** The product information and application details given by the company and its agents has been provided in good faith and meant to serve only as a general guideline during usage. Users are advised to carry out test and take trials to ensure on the suitability of the products meeting their requirement prior to the full scale usage of our products. Since the correct identification of the problems, quality or other materials used and the on-site workmanship are factors beyond our control, there are no guarantee/warranty as to the result obtained. The company does not assure any liability for unsatisfaction results arising from the use of our products.