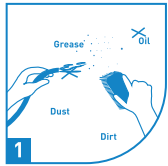
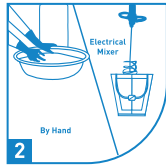


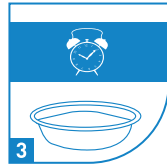
HOW TO APPLY



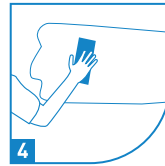
1 Clean the surface with sand paper / putty blade & then dampen the surface.



2 Add Putty in water to obtain a lump free paste & mix well. [Recommended mix 40% water]



3 Let it stand for 10 minutes for additives to dissolve & then Re-mix it again for 2 minutes.



4 Apply 1st coat with putty blade. [Thickness of 0.5-1mm]



5 Allow the surface to dry for atleast 3-4 hours.



6 Pre wet the 1st coat need based and then apply 2nd coat.

TECHNICAL INFORMATION

TEST	TEST METHOD	SPECIFICATION	RESULTS
Water Demand	IS:4031(Part-4)1988	30-45%	34.5
Pot Life	Internal	>90 Minutes	120
Setting Time: Initial	IS:4031 (part-5) :1988	>30 min	275-295
Setting Time: Final		<=600 min	285-300

PROPERTY	TYPICAL RESULTS
Coverage	8 - 15 Sq.Ft/Kg [Depending on finish of the Wall]
Recommended Mixing	300 - 400 ml of water per kg

KEY FEATURES

- Excellent adhesion to wall surface
- Cost-effective
- No painting required
- Aesthetic look for ceiling and interior walls



STORAGE



Walplast Products Pvt. Ltd. ISO 9001 : 2015 Certified Company

Corporate Office: Rainbow Building, Plot No. 13, Sector - 24, Mumbai Pune Highway Service Road, Turbhe, Navi Mumbai - 400 705, Maharashtra, India. Tel no.: 022-41418282. Enquiry No.: 1800 3000 6650

Email: sales@walplast.com, customercare@walplast.com / For more details visit us at: www.walplast.com

Disclaimer: The product information and application details given by the company and its agents has been provided in good faith and meant to serve only as a general guideline during usage. Users are advised to carry out test and take trials to ensure on the suitable of the products meeting their requirement prior to the full scale usage of our products. Since the correct identification of the problems, quality or other materials used and the on-site workmanship are factors beyond our control, there are no guarantee/warranty as to the result obtained. The company does not assure any liability for unsatisfactory results arising from the use of our products.

Walplast®
HOMESURE
COLOUR PUTTY

**MILAYE
SIRF PAANI
LAGAYE BINA
PARESHAANI®**



20 Kg Bag | PACKAGING

Highlights

- ✓ Can Save 100% Of Painting Cost
- ✓ Gives Smooth And Glossy Finish
- ✓ Can Be Applied On Interior Walls And Ceiling
- ✓ Available in 4 Colour